

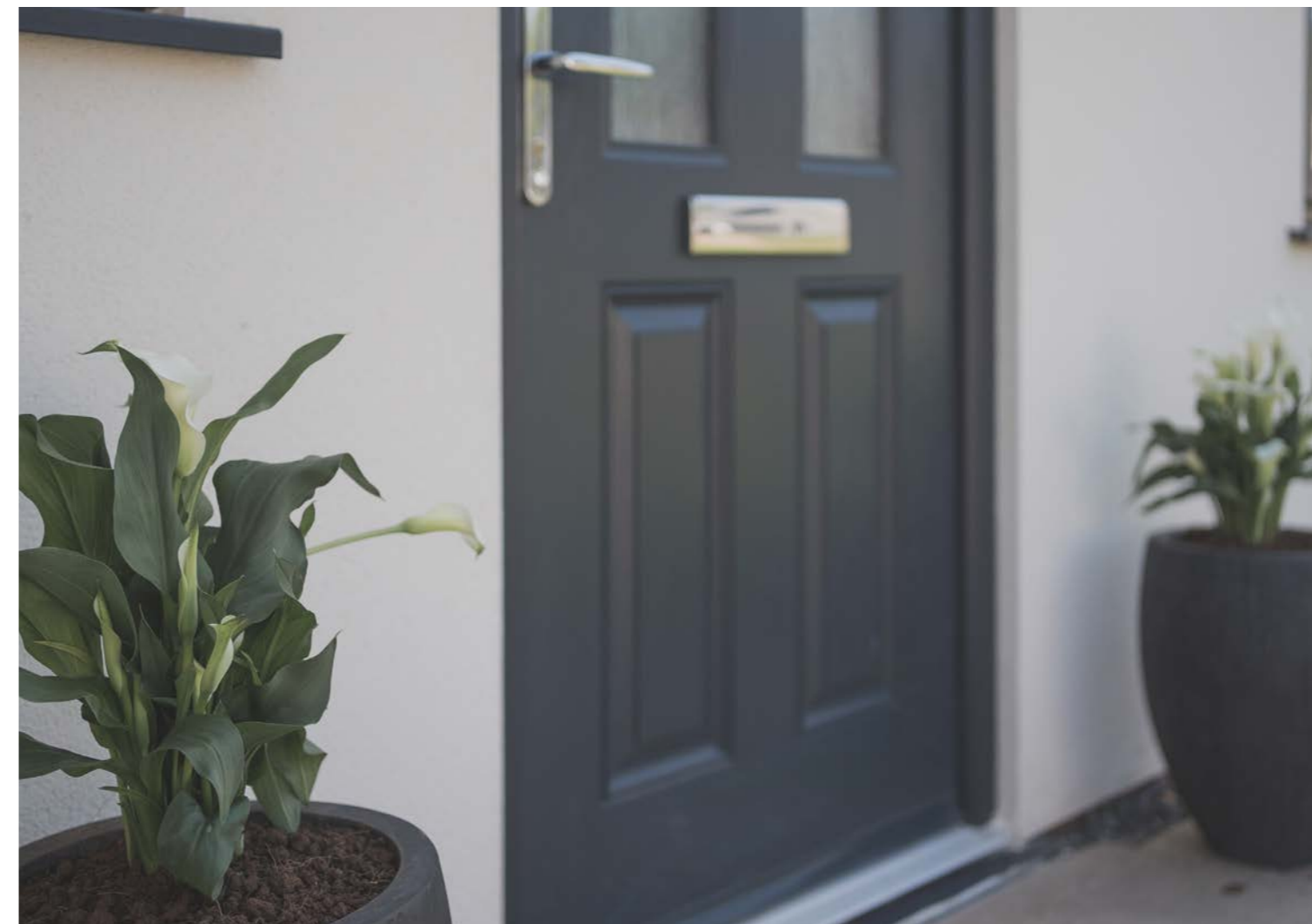
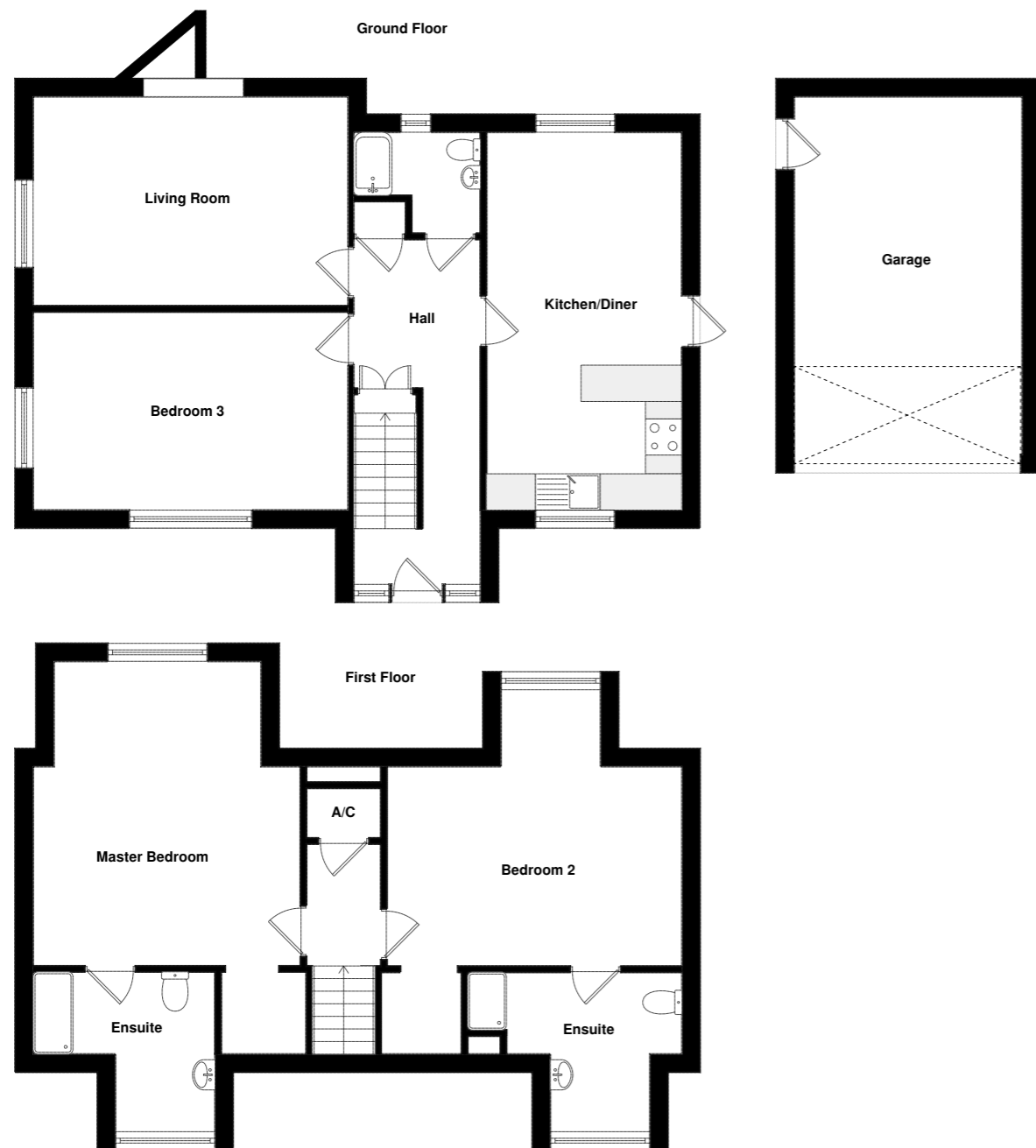
PLOTS 4, 6, 7 & 8

Floor Plan

Kitchen/Dining Room	7.2m x 3.4m	Master Bedroom	5.2m x 5.1m
Living Room	5.3m x 4m	En-suite	3.5m x 2.4m
Bedroom 3	5.3m x 3.6m	Bedroom 2	4.7m x 3.5m
Bathroom	2.3m x 2.5m	En-suite	3.4m x 2.4m

Total: 167 m² including 26 m² garage

*Dimensions and specifications are preliminary and subject to change.



PLOTS 5 & 9

Floor Plan

Kitchen/Dining Room	7.2m x 3.4m	Master Bedroom	5.2m x 5.1m
Living Room	5.3m x 4m	En-suite	3.5m x 2.4m
Bedroom 3	5.3m x 3.6m	Bedroom 2	4.7m x 3.5m
Bathroom	2.3m x 2.5m	En-suite	3.4m x 2.4m

Total: 167 m² including 26 m² garage

*Dimensions and specifications are preliminary and subject to change.