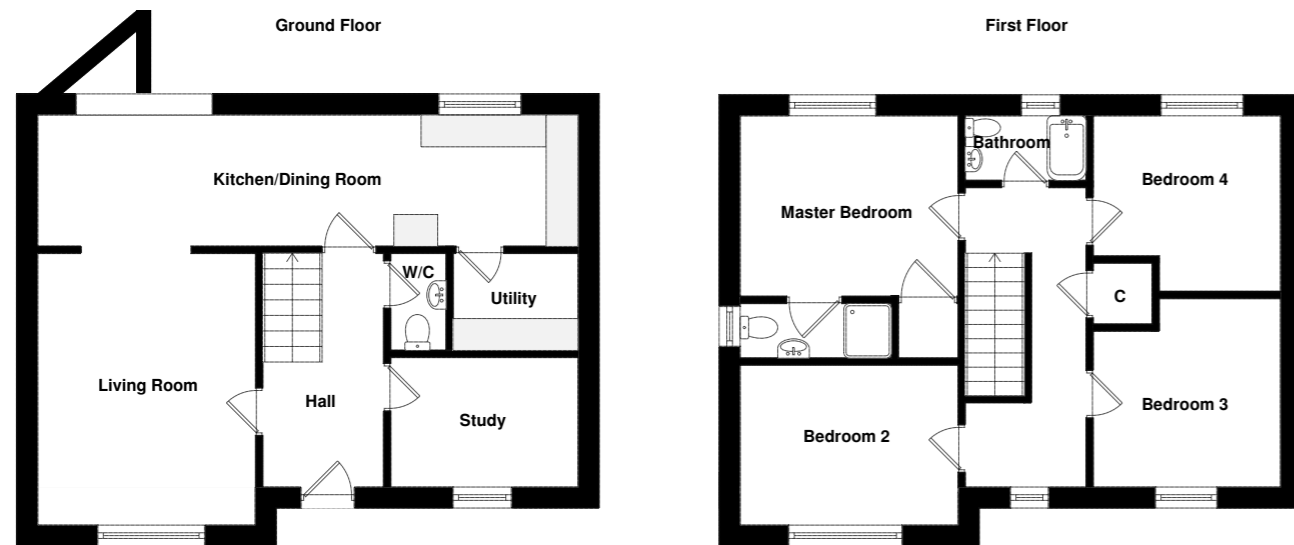


PLOT 1

Floor Plan

| | | | |
|---------------------|-------------|----------------|-------------|
| Kitchen/Dining Room | 9.5m x 3m | Master Bedroom | 4m x 3.7m |
| Utility Room | 2.1m x 1.8m | En-suite | 3m x 1m |
| WC | 1.8m x 1.1m | Bedroom 2 | 4m x 3.7m |
| Living Room | 5.4m x 4m | Bedroom 3 | 3.2m x 3m |
| Study | 2.5m x 3.2m | Bedroom 4 | 3.3m x 2.8m |
| | | Bathroom | 2.6m x 1.8m |

Total: 147 m²



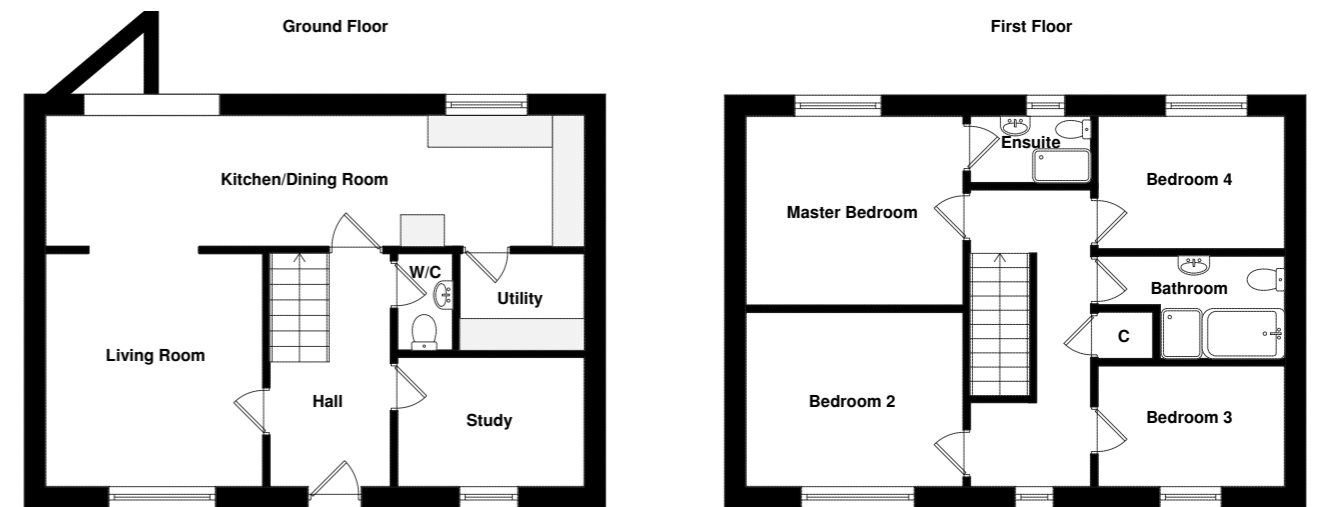
*Dimensions and specifications are preliminary and subject to change.

PLOT 2

Floor Plan

| | | | |
|---------------------|-------------|----------------|-------------|
| Kitchen/Dining Room | 9.9m x 3m | Master Bedroom | 3.8m x 3.7m |
| Utility Room | 2.6m x 1.8m | En-suite | 1.6m x 1.9m |
| WC | 1.8m x 1.1m | Bedroom 2 | 3.8m x 3.8m |
| Living Room | 4.4m x 3.8m | Bedroom 3 | 2.7m x 4m |
| Study | 2.5m x 3.8m | Bedroom 4 | 2.9m x 4m |
| | | Bathroom | 1.9m x 4m |

Total: 146 m²



*Dimensions and specifications are preliminary and subject to change.



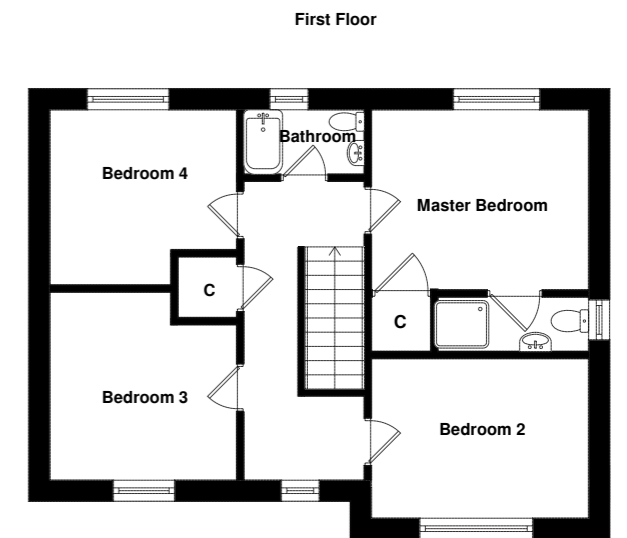
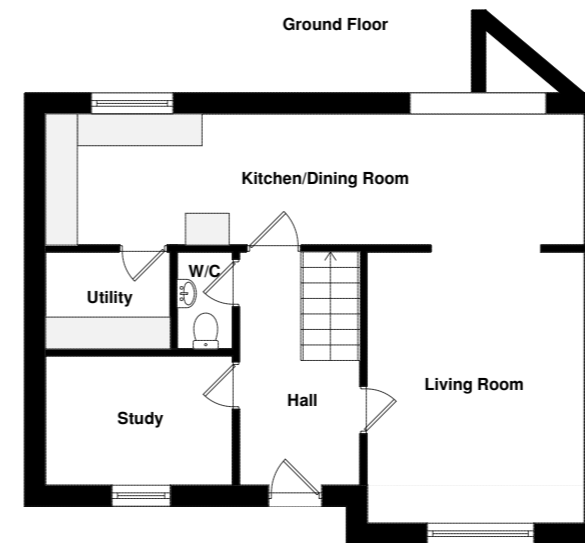
PLOT 3

Floor Plan

| | |
|---------------------|-------------|
| Kitchen/Dining Room | 9.5m x 3m |
| Utility Room | 2.1m x 1.8m |
| WC | 1.8m x 1.1m |
| Living Room | 5.4m x 4m |
| Study | 2.5m x 3.2m |

| | |
|----------------|-------------|
| Master Bedroom | 4m x 3.7m |
| En-suite | 3m x 1m |
| Bedroom 2 | 4m x 3.7m |
| Bedroom 3 | 3.2m x 3m |
| Bedroom 4 | 3.3m x 2.8m |
| Bathroom | 2.6m x 1.8m |

Total: 147 m²



*Dimensions and specifications are preliminary and subject to change.